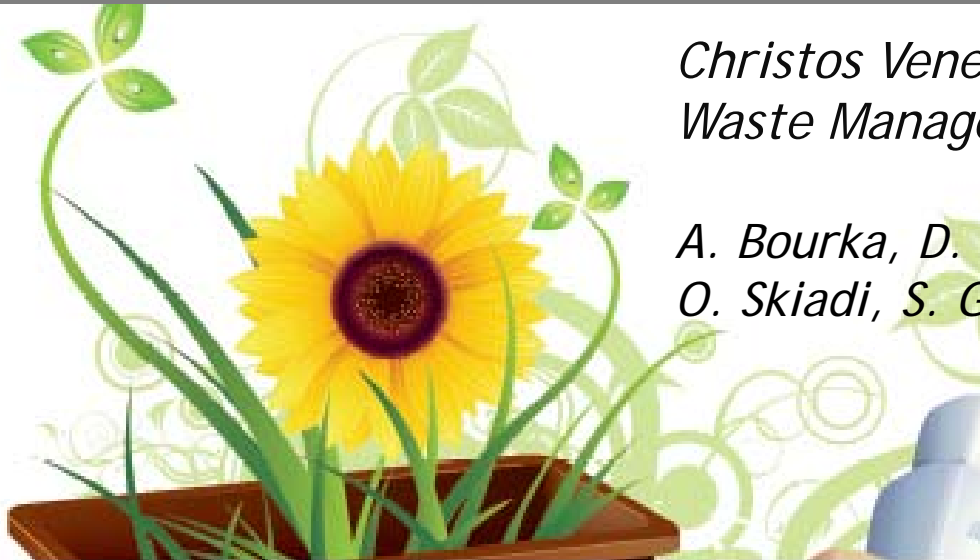




LIFE10 ENV/GR/605

# SET UP, MONITORING AND EVALUATION OF BIOWASTE SOURCE SEPARATION SCHEME IN ATHENS AND KIFISSIA MUNICIPALITIES, GREECE



*Christos Venetis*  
*Waste Management Engineer, EPTA S.A*

*A. Bourka, D. Malamis, K. Moustakas, M. Loizidou*  
*O. Skiadi, S. Giannaki, E. Michalopoulou, N. Sakaveli*



**ΕΠΤΑ**  
ΕΠΙΧΕΙΡΗΣΙΑΚΟ ΜΗΧΑΝΙΣΜΟΣ ΕΞΥΠΗΡΕΤΗΣΗΣ ΠΟΛΙΤΩΝ



# Setting up the collection system

## Basic planning steps

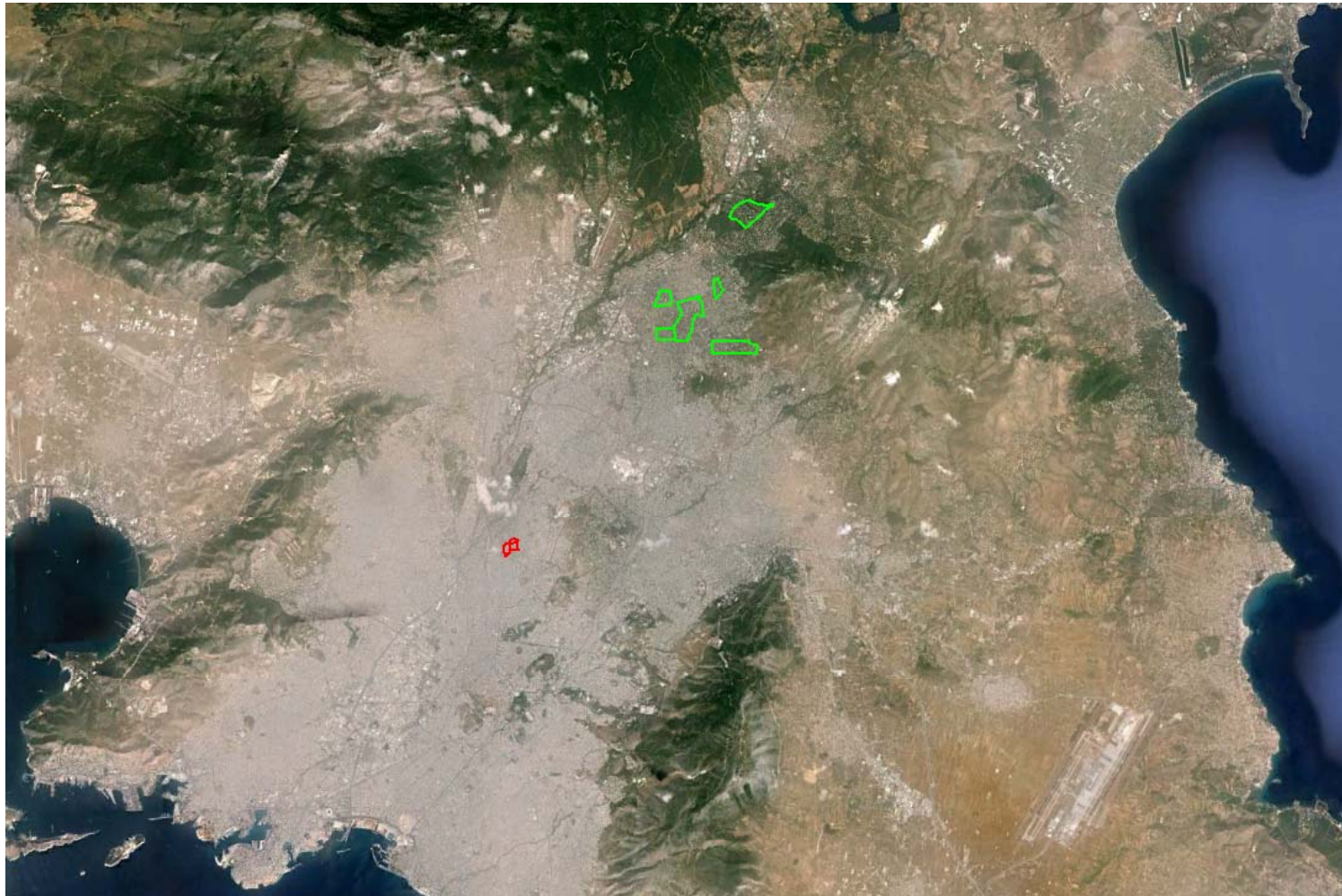


- Selection of the participating areas in the two Municipalities
- Estimation of the total households
- Selection of the collection system for each area (site visits within the two Municipalities, meetings with the waste collection departments)
- Selection of equipment – specifications (bins, biodegradable bags)



# Setting up the system

## Participating Residential Areas



# Setting up the collection system

## Standard household equipment



- Participation on a voluntarily basis
- > 40% of the households in each area received a bio bin and biodegradable bags



# Setting up the collection system

## Door to door collection



- Municipality of Kifissia





# Setting up the collection system

## Road container collection



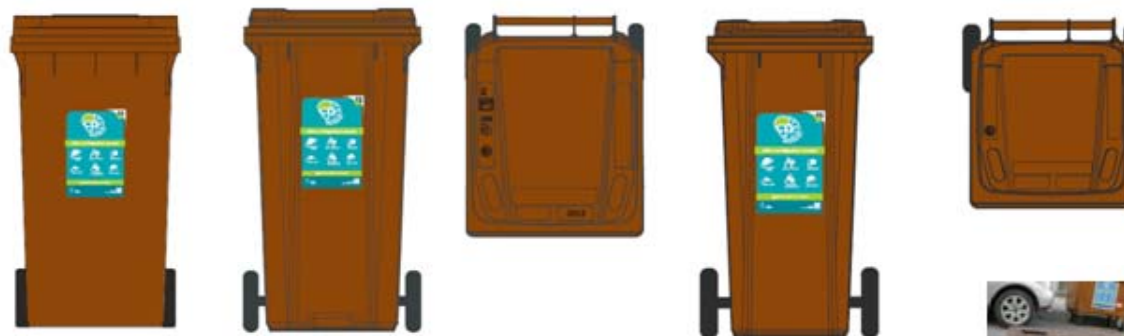
- Municipality of Athens



# Setting up the collection system



- Additional external bins 40-360 lt for the door to door collection system (depending on the number of households per building)
- Road container system with 660 lt bins
- Road containers were placed next to the existing packaging recycling and refuse bins



# Setting up the collection system

## Communication – Promotional tools



- Logo
- Info line
- Website
- Leaflet
- Facebook page



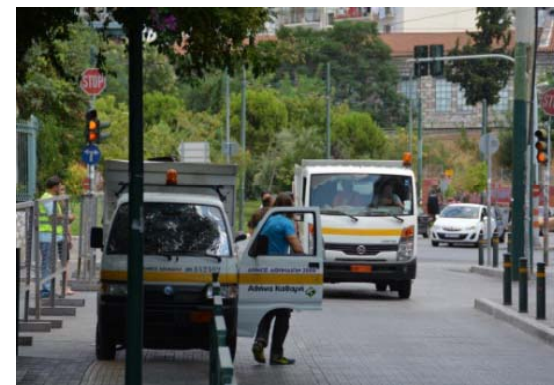


# Setting up the collection system

## Bin distribution – Initial roll out



- Notification of the households via letter regarding the distribution date
- Door to door communication
- Delivery of bio-bins and bags, instruction leaflet



# Biowaste collection



- Collection frequency 2-3 times/week
- 80% of the participating households are satisfied with the collection frequency



# Monitoring Results



- 45% of the households that received a bio bin participated in the collection system one year after the initial roll out
- Average capture was 4,00 kg/per participating household



# Monitoring Results

## Material quality



### Athens



### Kifissia



# Monitoring Results

## Evaluation



- Biowaste capture rate of around 80 kg/cap
- Organics represent 44,3% in Municipal Solid Waste
- With a daily production of 1,1 kg/d\*cap → 45% biowaste diversion per participant in the system
- In Germany in 2007 average capture rate was 60 kg/cap



# Guide on the implementation, monitoring and evaluation of biowaste source separation schemes



Διαλογή στην πηγή και κομποστοποίηση Υπολειμμάτων Τροφών -  
Πιλοτική εφαρμογή στους Δήμους Αθηναίων και Κηφισιάς



**ΟΔΗΓΟΣ ΓΙΑ ΤΗΝ ΕΦΑΡΜΟΓΗ, ΕΛΕΓΧΟ ΚΑΙ ΑΞΙΟΛΟΓΗΣΗ  
ΠΡΟΓΡΑΜΜΑΤΩΝ ΔΙΑΛΟΓΗΣ ΣΤΗΝ ΠΗΓΗ ΚΑΙ ΚΟΜΠΟΣΤΟΠΟΙΗΣΗΣ  
ΒΙΟΑΠΟΒΛΗΤΩΝ**





THANK YOU FOR YOUR ATTENTION

*cvenetis@epta.gr*

